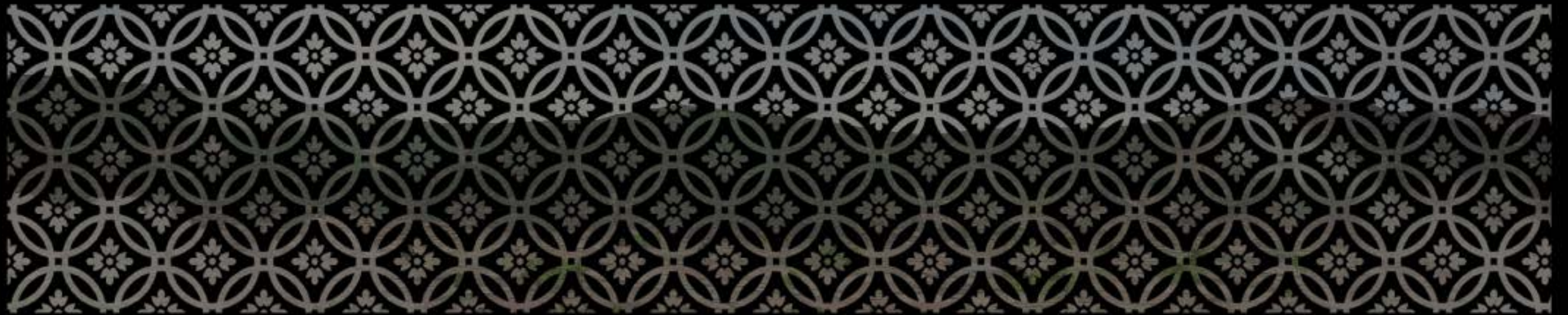




Di Dau O Muntajae



R e e x p e r i e n c e l i f e !



Rediscover peace in tranquility





Di Dau O Muntajae

Being closer to the pale-blue dot. The only real home we've ever known!

Finding inner peace is fetching treasures. The fact you only realize when you submit yourself to the awe of nature. That's when you are surrounded by everything close to nature's precedence. You rejuvenate and rediscover yourself in the creativity, serenity, and boundlessness of nature as you bring your soul back to where it belongs.

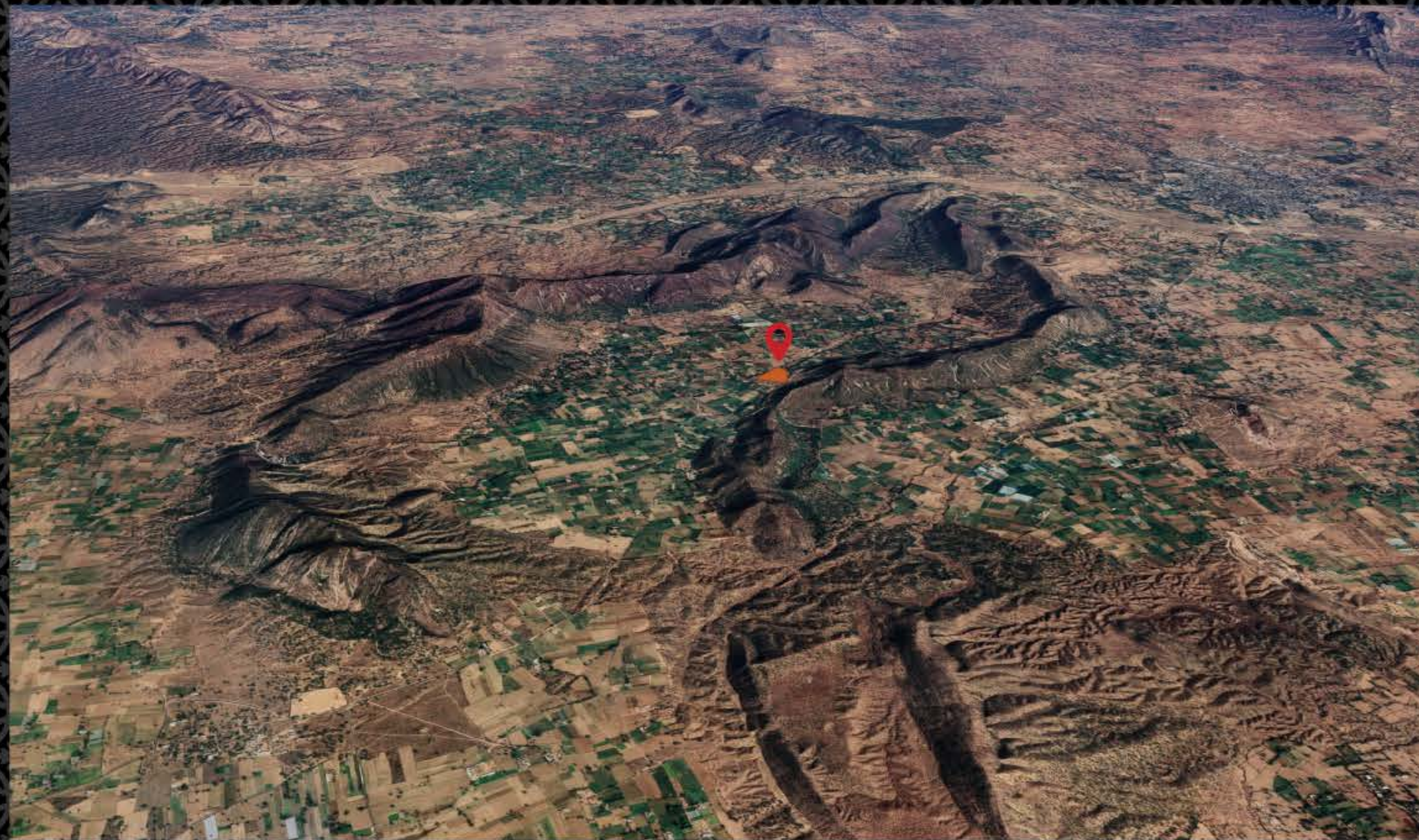
Di Dau O Muntajae brings you all close to the virtues of nature, raising premium hospitality in the laps of deep lush natural landscapes. Together with the best-in-class amenities, resurfaced into a fine property to serve you with a prime getaway experience!

Once-in-a-lifetime Mountain View

Leave behind the curbed views of concrete jungles. Choose to see the mesmerizing sight of unending highlands and lush foothills all around your natural dwelling. Get smitten by the scenic mountain view and detoxify your senses with the amazing panoramic sightings of natural habitations.

Imagine the artistic traits of altering shades of the sun. Colorful discrete accents of the enormous sky. The windy cloud movements through the peaking crags.

Perform yogic asanas and meditate in the morning sun. Take lovely photos. Explore the beauty of nature's vastness with this never-before sprawling mountain view forming a scenic bed around you at Di Dau O Muntajae!



Untamed nature. From the lens of hospitality!

Di Dau O Muntajae derives its name from two words – Di Dau O which is a Vietnamese term meaning a place and Muntajae which in Arabic means Tranquil.

A Tranquil Place!

That Di Dau O Muntajae is. Where you constantly converse with the earth and its vastness, under the rule of nature.

Temperature

May - 34°C (Average)

January - 16°C (Average)

Rain Fall

August - 170mm

Wind

13 KMPH



Site Highlights

Grand Entrance

Luxurious arrival experience

Secure Community

Gated security fencing with CCTV surveillance

World-Class Club Facility

Fully-equipped and all-maintained 45,000 sq. ft. area

Acres of Green Space

5.5 acre of green space

Tech-aided Smart Homes

Echo and Alexa are frequent in-room assistants for you

Hospitality Experts

Trained professionals and quality-vetted practices

Finest Accommodations

All-fitted with the latest aids and supplies

Scenic View

Full of nature's bliss

Unique Watch-Tower

45 feet high watch-tower

Car Charging Stations

Smart, safe and innovative charging solutions



Easy Reach and Connectivity

Alila Fort

13.0 Km

Samod Palace

16.0 Km

JW Marriot Resort and Spa

35.0 Km

Fairmont

39.0 Km

Buena Vista

45.0 Km

National Highway 08

06.0 Km

Rajnesb Hospital

15.5 Km

Jaipur Railway Station

54.0 Km

Jaipur Intl Airport

64.0 Km

Delhi Airport

203.0 Km

Amber Palace

44.0 Km

Ajabgarh

48.0 Km

City Palace

52.0 Km

Nargarh Fort

55.0 Km

Bhangarh Fort

72.0 Km

Jantar Mantar

52.0 Km

Sariska Tiger Reserve

67.0 Km

Khatu Shyam Ji

74.0 Km

Salasar Balaji

170.0 Km

Ajmer Sharif Darga

184.0 Km

Leave the road, take the trails!

Nestled amidst the beautiful Arawali mountain ranges, the resort finds its settlements at Mamtori Kalan - a scenic village in Shapura Tehsil in Jaipur (The Pink City Of India). You take 6 km off the national highway leaving the city noise behind to reach the enchanting confines of the resort.

A massive gate awaits to greet you at the entrance. This is your portal to the vast resort landscape along the backwoods and wilderness of nature, raised as a safe escapade served with cultured hospitality.

The property overlays the local neighborhoods and the ecology to get you a whole and untainted experience of a nature resort. The property expansively covers a natural landscape of 60,000 sq. ft. This features a 45,500 sq. ft. clubhouse with a high-end outdoor sports facility, all-equipped gymnasium, recreation and gaming zone, swimming pool, banquet, restaurant, open walkways, and organic plantations.

The villas and cottages are built to offer luxurious settings with all the lifestyle amenities and essential necessities available next to you. These villas are designed to get you the feel of life around nature. As you choose your comfort take a luxurious bath in your jacuzzi, curl up in the coziest of beddings, listen to self-indulging light music or just switch on to the picturesque view of the surroundings at a drop of the curtains. Discovering a never-before experience of a sorted life in the fine spreads of nature!



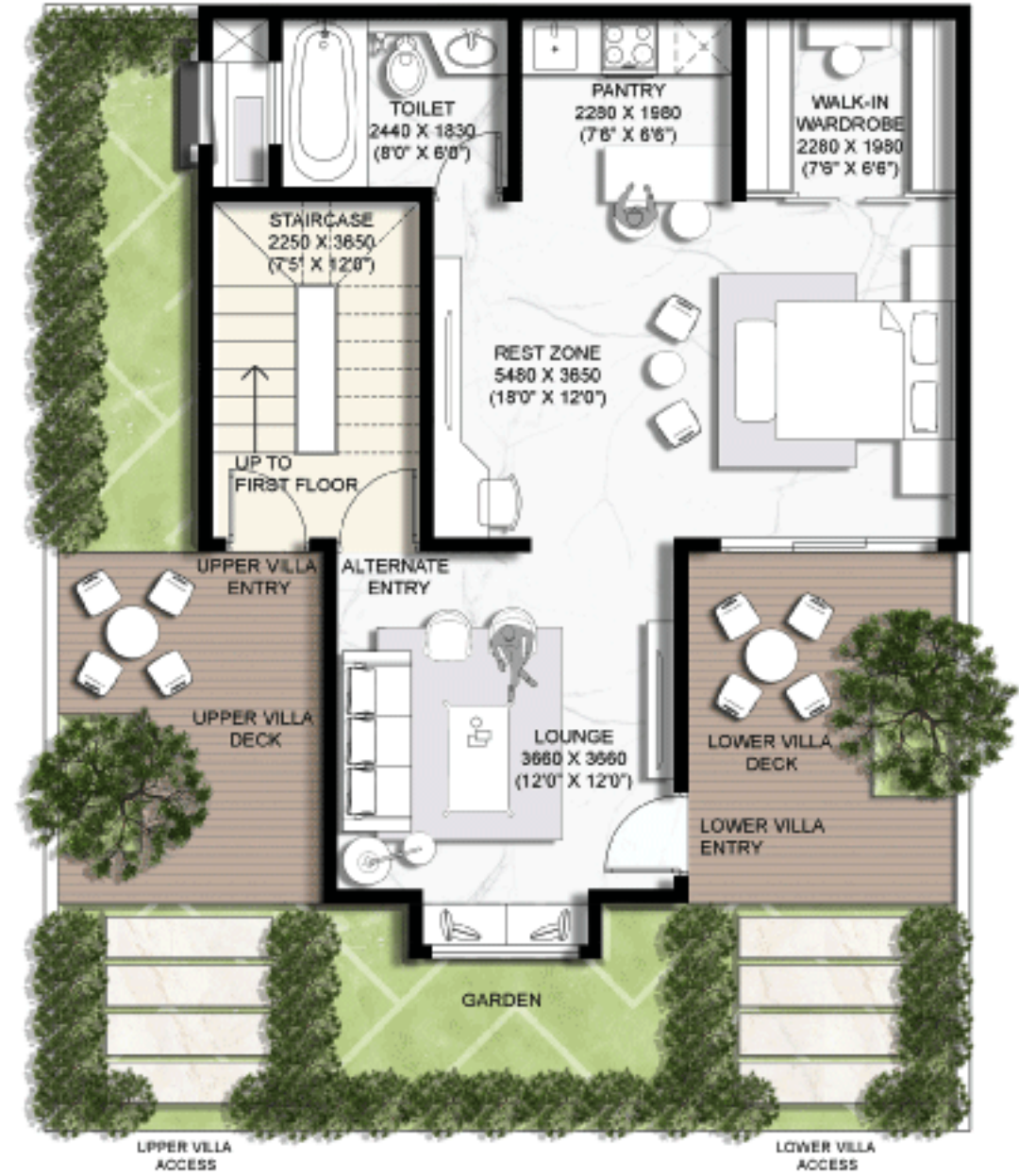


Tech-aided Smart Homes

We endorse and imbibe the excellence of civilized technology in every form. From security to convenience, we have the latest tech trends and traits furnished within our infrastructure.

Responding to human sensibilities, our smart villas make for a home that has everything 'connected' through smart technology. You have smart key entry, voice recognition systems, biometric lockers, intelligent devices, and virtual assistance on board to make your stay full of convenience and all in your control.

Your room is equipped with the latest devices and appliances all controlled by voice-enabled apps and AI-based systems. Echo and Alexa are frequent in-room assistants for you. You do not feel away from the much-dependent technology that is part of your world as you reach out to smart entertainment systems and top-of-the-line service equipment at your villa home. To find you the apt technology support for an upgraded lease of tech-world connectivity and control.



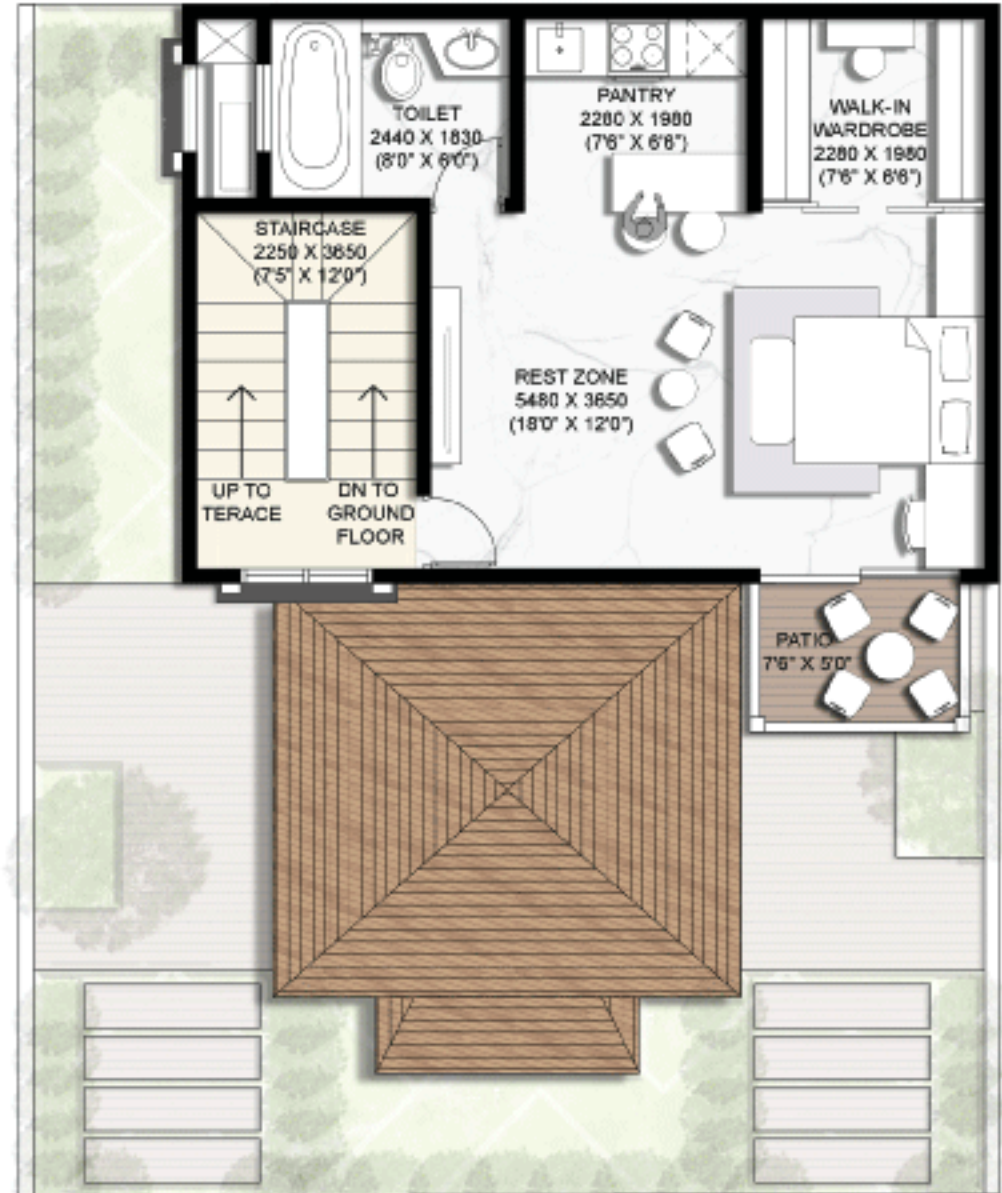
Ground Floor

Builtup Area 706 SQ Feet

Green Area 325 SQ Feet

Common Terrace Area 162 SQ Feet

Total Area 1193 SQ Feet



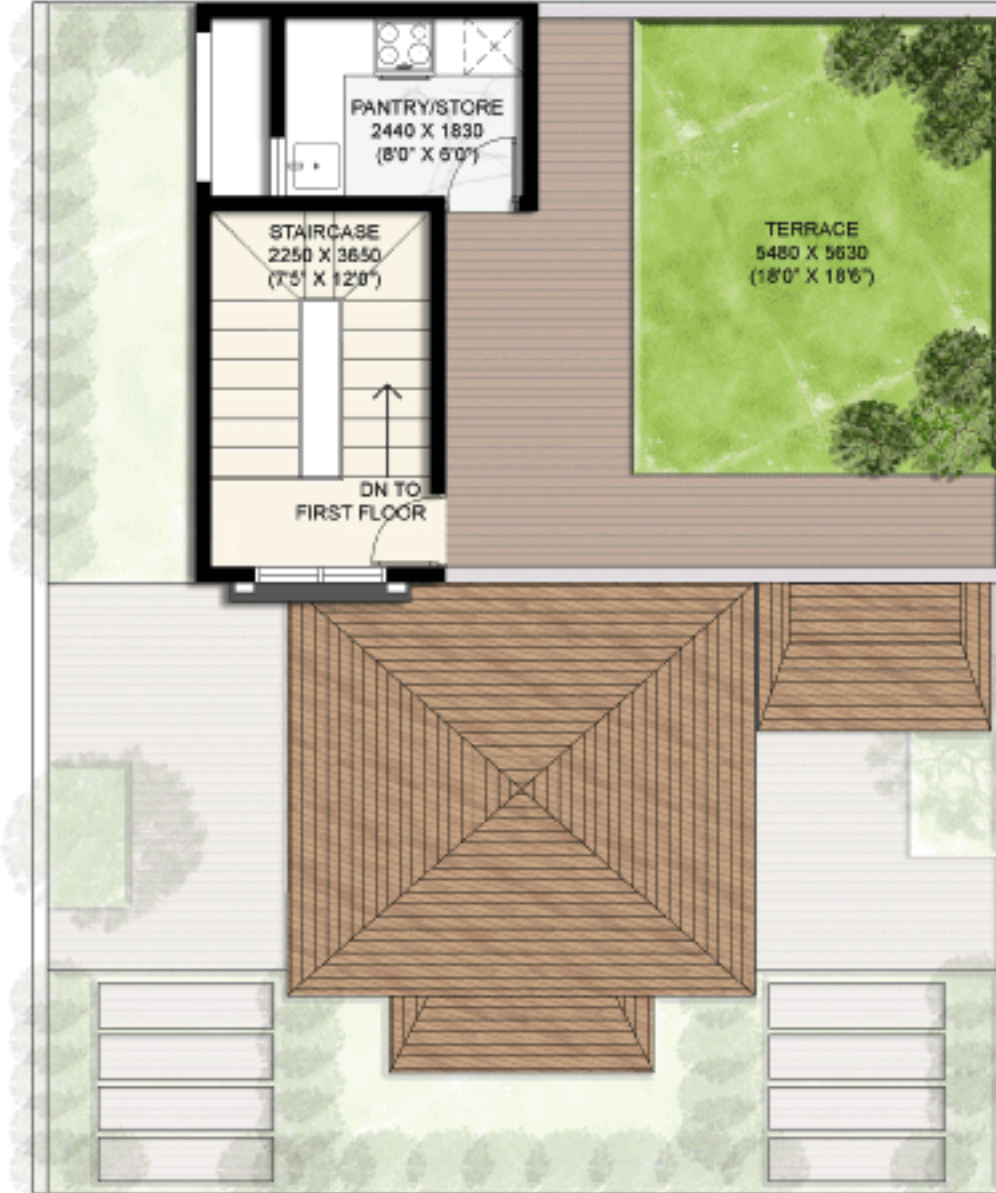
First Floor

Builtup Area 584 SQ Feet

Green Area 350 SQ Feet

Common Terrace Area 162 SQ Feet

Total Area 1096 SQ Feet



Terrace

Unit Design

Zero Passage

No area wastage

Exclusive Entry

Separate entry for upper and lower floor

Maximum Sunlight

Brighten a space without using electricity.

Private Garden

Separate decks for upper and lower floor

Walk-In Wardrobe

6.5 feet of wardrobe space on both sides

Social Counter

Interactive wine & dine area

Di Dau O Muntajae Weddings

Getting the most out of your lifetime event!

Experiencing the Never-before Destination Wedding

Where nature is the witness of the eternal vows served by the grand virtues of hospitality!

Grand guest reception

Eccentric green landscape

Lavish banquets and ceremony halls

All-equipped spacious accommodations

Private and public guest venues

Customized event packages

Wedding tent and prop supplies

Stage décor and floral arrangements

Variety of theme and music

Theme-based lighting and photography

Traditional and folkloric attractions

Full-course Catering and Bar Menu

Home-grown preparations with local specialty

Served by finest organizers and program curators

Fully trained wedding crew and support staff

Provisions for intimate and celebrity weddings

High-end security and power backup facility



Nana Nani Garden and Sattvic Arrangements

At Di Dau O Muntajae, we propose a holistic environment and a broader band of unique experiences to our guests. We bring together various factors of Indianized lifestyle furnished by core indigenous beliefs and cultural values.

Beyond everything filled with youthful energies, you will find a section of greens full of elderly bliss at Nana Nani Garden. This area is totally dedicated to senior citizens and the children accompanying them. This estate lawn is designed to keep them free from any worldly frills and noise. For them to enjoy their quiet hours walking through a beautiful arrangement of flowers and listening to the mellowing sound of nature passing by and meeting people of the same perspective.

The pious and pristine environment of the Sattvic confines connects you with spirituality and mindfulness through havan rituals performed by psychic saints. On the other side of havan and puja you are served with Sattvic Bhojan, prepared in the dispersed rasoirs all run by satyavrat brahmacharis. This food is prepared with home-grown vegetables and all-organic ingredients following the purest culinary methods that revive your untainted-self and reassure you of inner peace.



Services and Amenities

Best-in-class Hospitality

Luxurious Accommodations

Outdoor Swimming Pool

Zen Garden

Nature Spa

On-Site Restaurant

Recreation Zone

Bar/Lounge

BBQ Area

Outdoor & Indoor Games

Daily Housekeeping Service

Dry Cleaning Service

Children Play Area

Organic Garden

Interconnecting Rooms

Banquet

Finest Destination Wedding Spot

Club House

Gymnasium

Salon

Yogic Zone

Gaming Arena

Library and Reading Zone

Conference Facilities

Business Centre

Travel Desk

Party Lawn

Watch Tower

Secure Parking

Airport Pickup Service

24-hour Porterage

24-hour Reception

Broadband Internet Access

Wake Up Calls

Disabled Access Rooms

Wheel Chair Access

Service Area



Facilities

Mud Bath

Kids Zone

Party Hall

Corporate Meeting

Sun Bath

Birthday Celebration

Kids Party

Hours Riding

Nature Therapy

Ayurvedic Therapy

Sauna

Steam Room

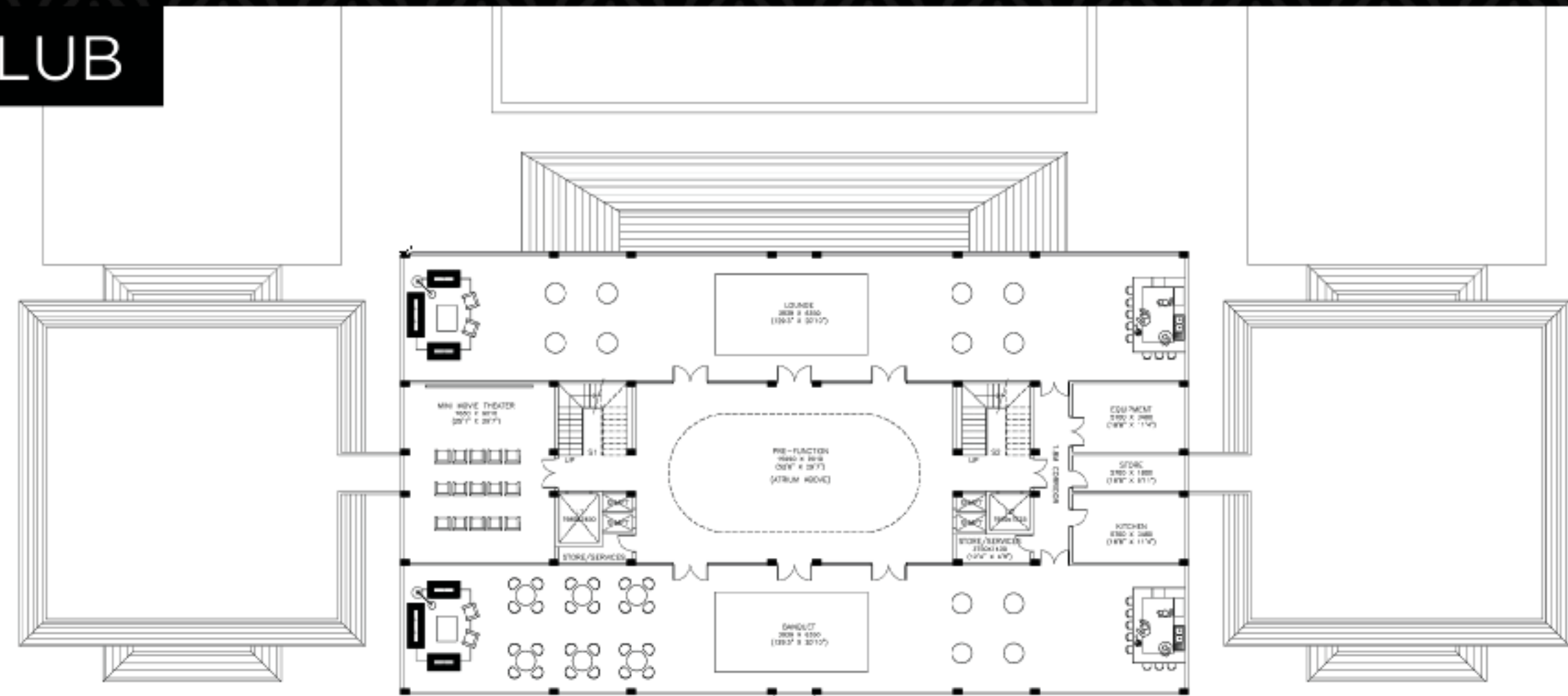
Theater

Hurdles Game

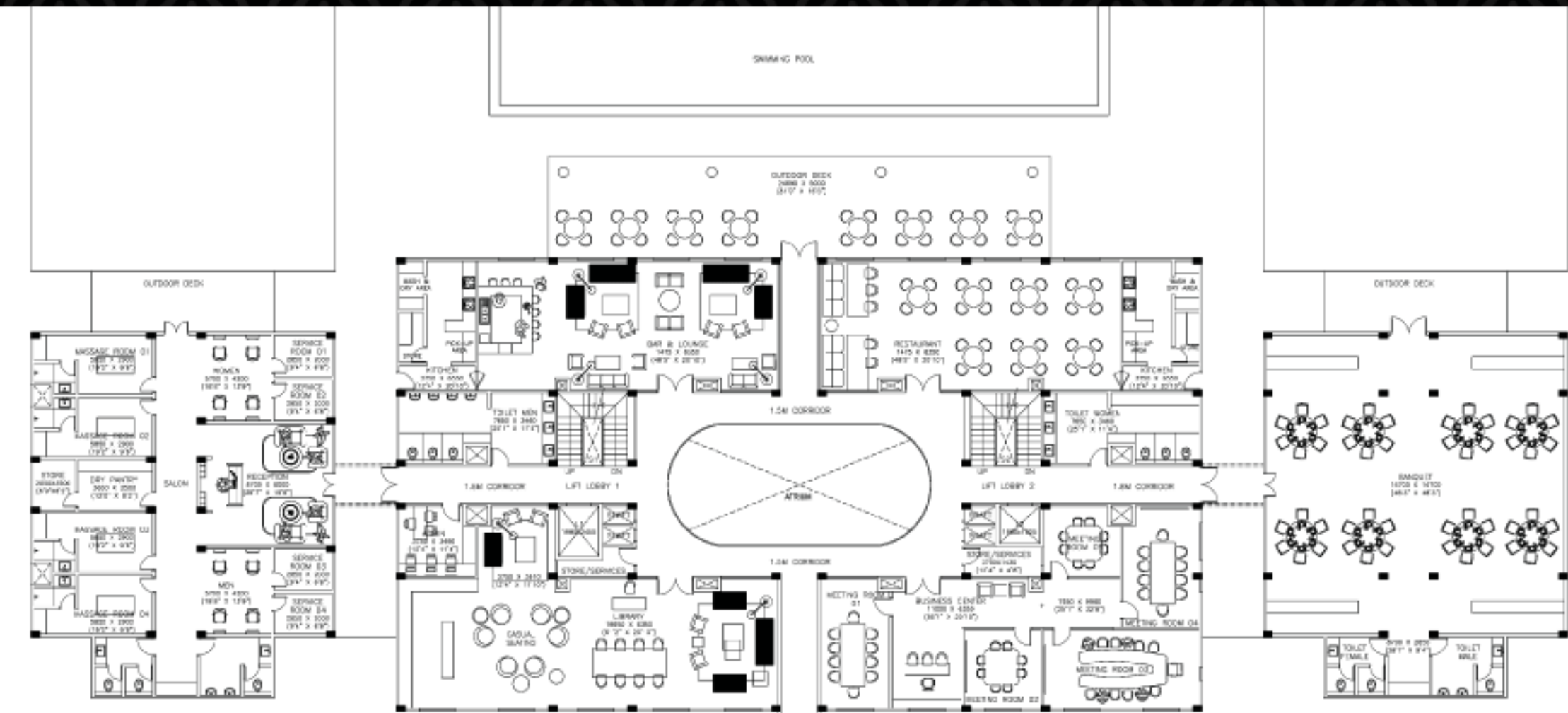
Boxing

Kathputli Dance

THE CLUB

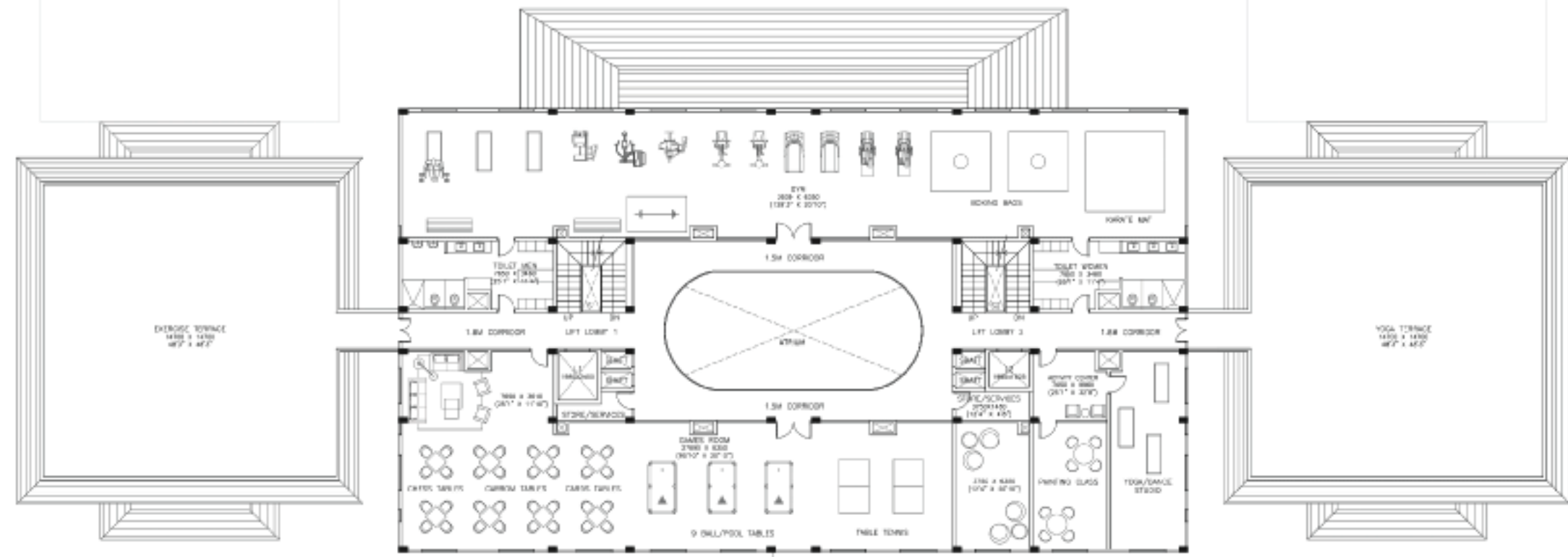


Basement Plan

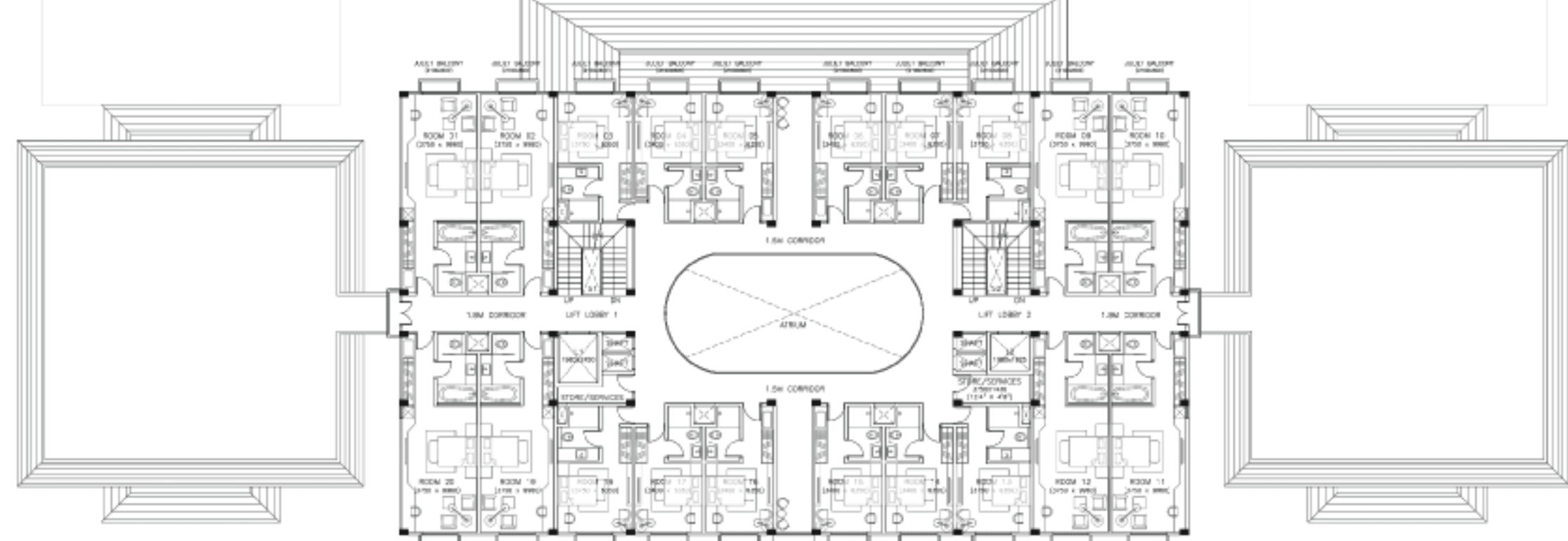


Ground Floor Plan

THE CLUB

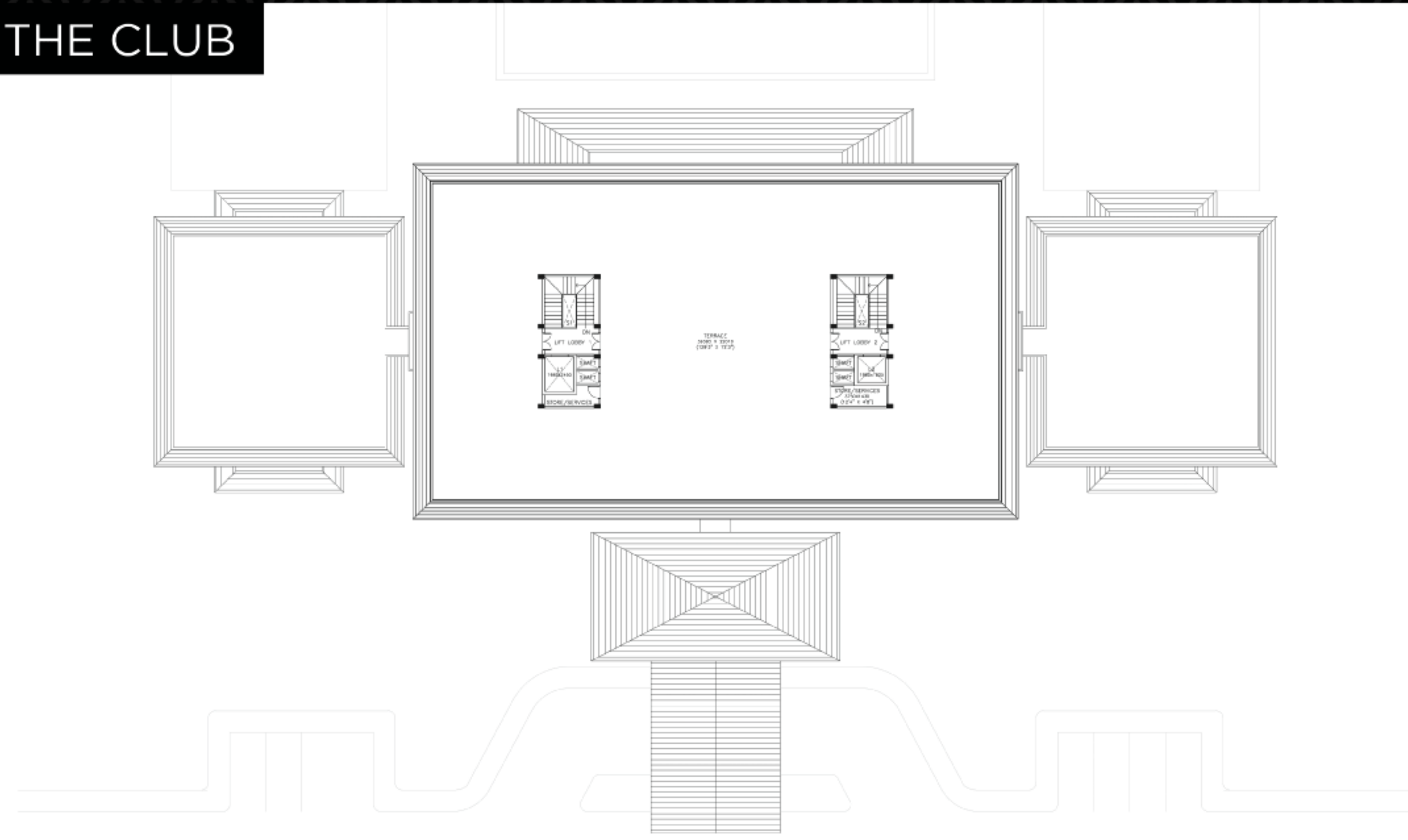


First Floor Plan

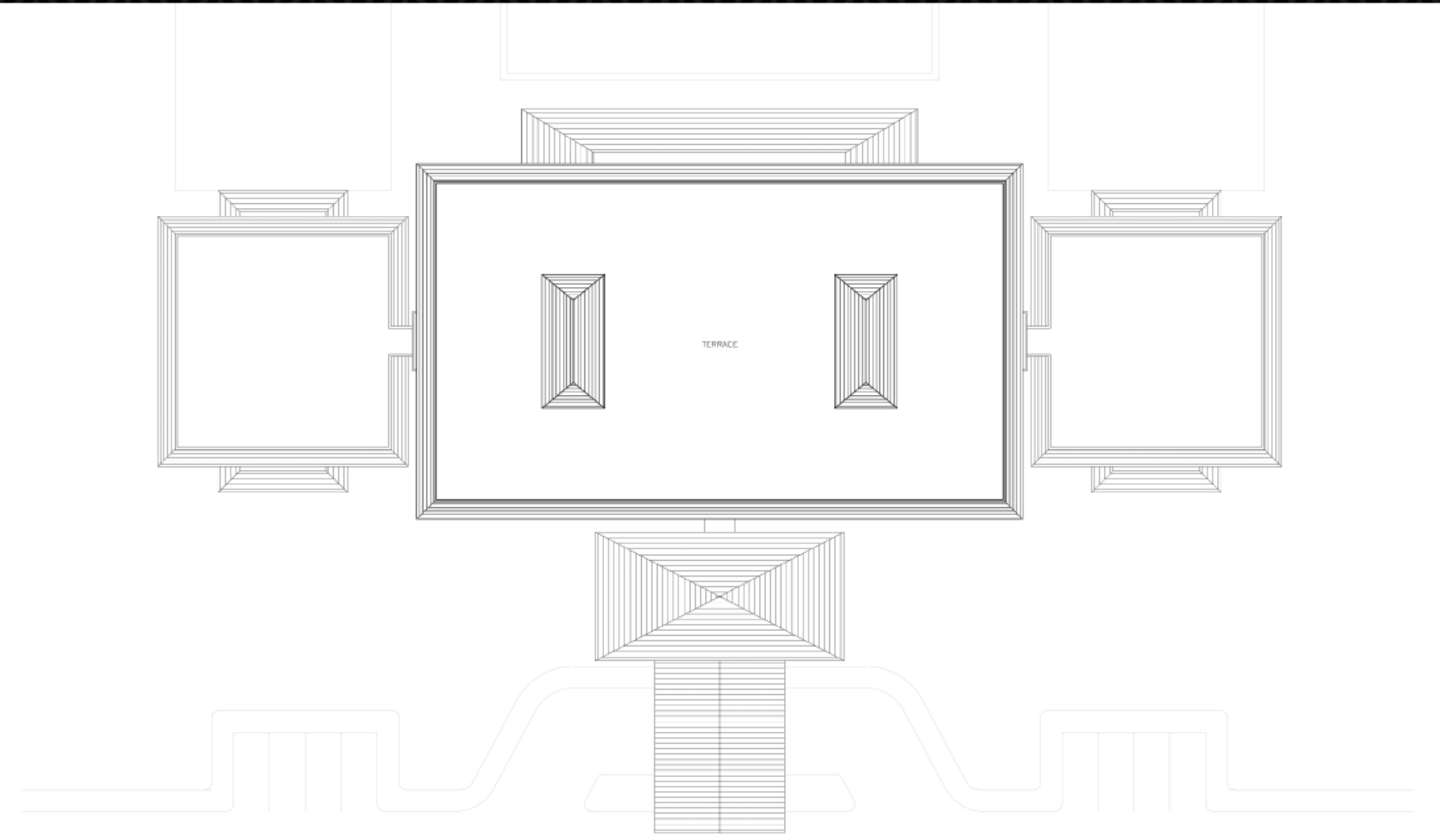


Second Floor Plan

THE CLUB



Terrace Plan



Roof Plan

w w w . d i d a u o m u n t a j a e . c o m



Developer and Promoter

Di Dau O Muntajae

Khasra No. 620/622/653

Gram Mamtori Kalam, Jaipur - 303103

<http://didauomuntajae.com>

Head Office

625-626, 6th Floor, Jaipur Electronic Market,

Near Riddhi Siddhi, Mansarovar Link Road,

Jaipur (Raj.) 302020

UK Office :

58. Snellsdala Road

Rugby

Warwickshire - CV23 0GN

United Kingdom

Dubai Office:

102, Ali Mohd. Building, Bur Dubai

Write Us:

info.didauomuntajae@gmail.com

